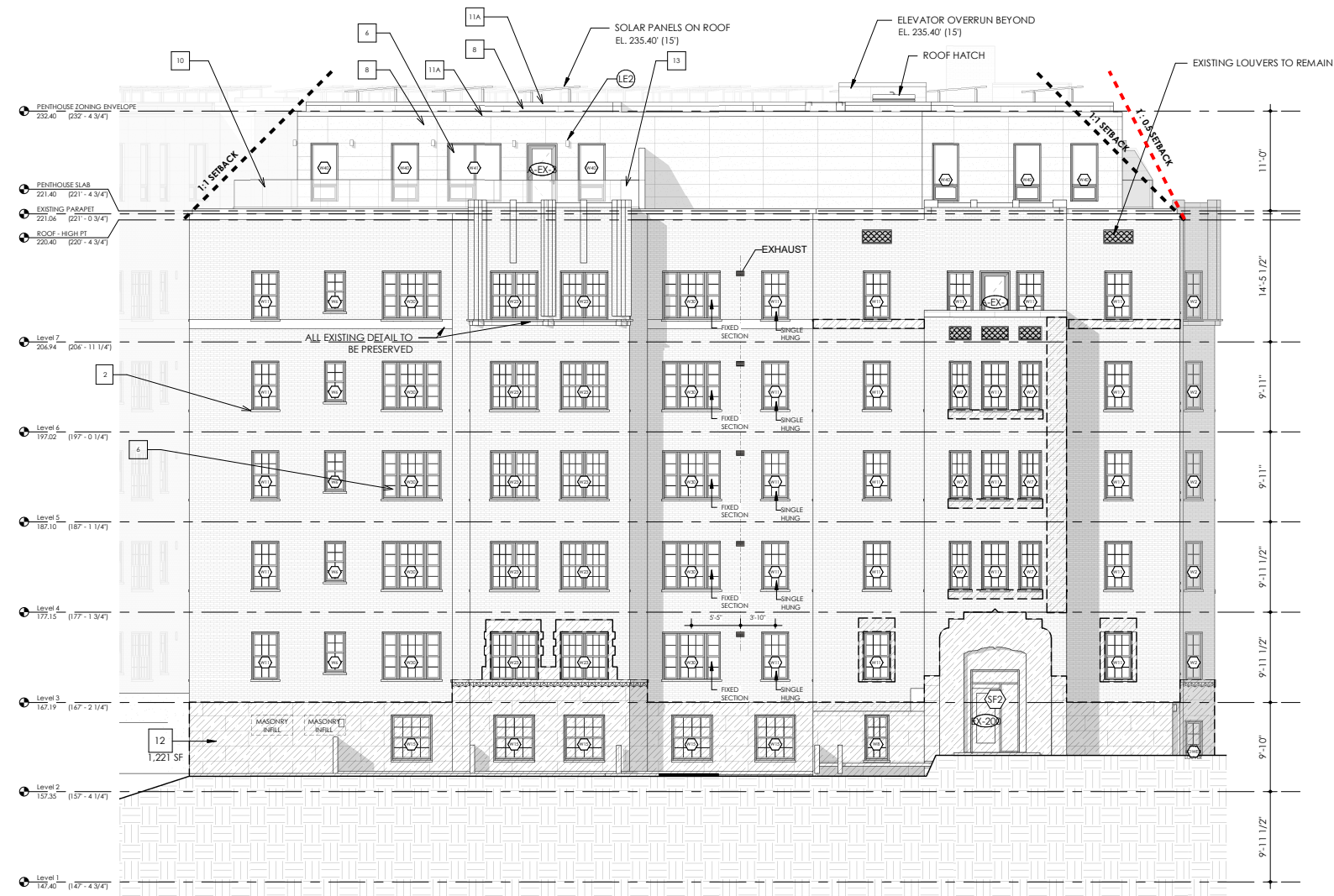
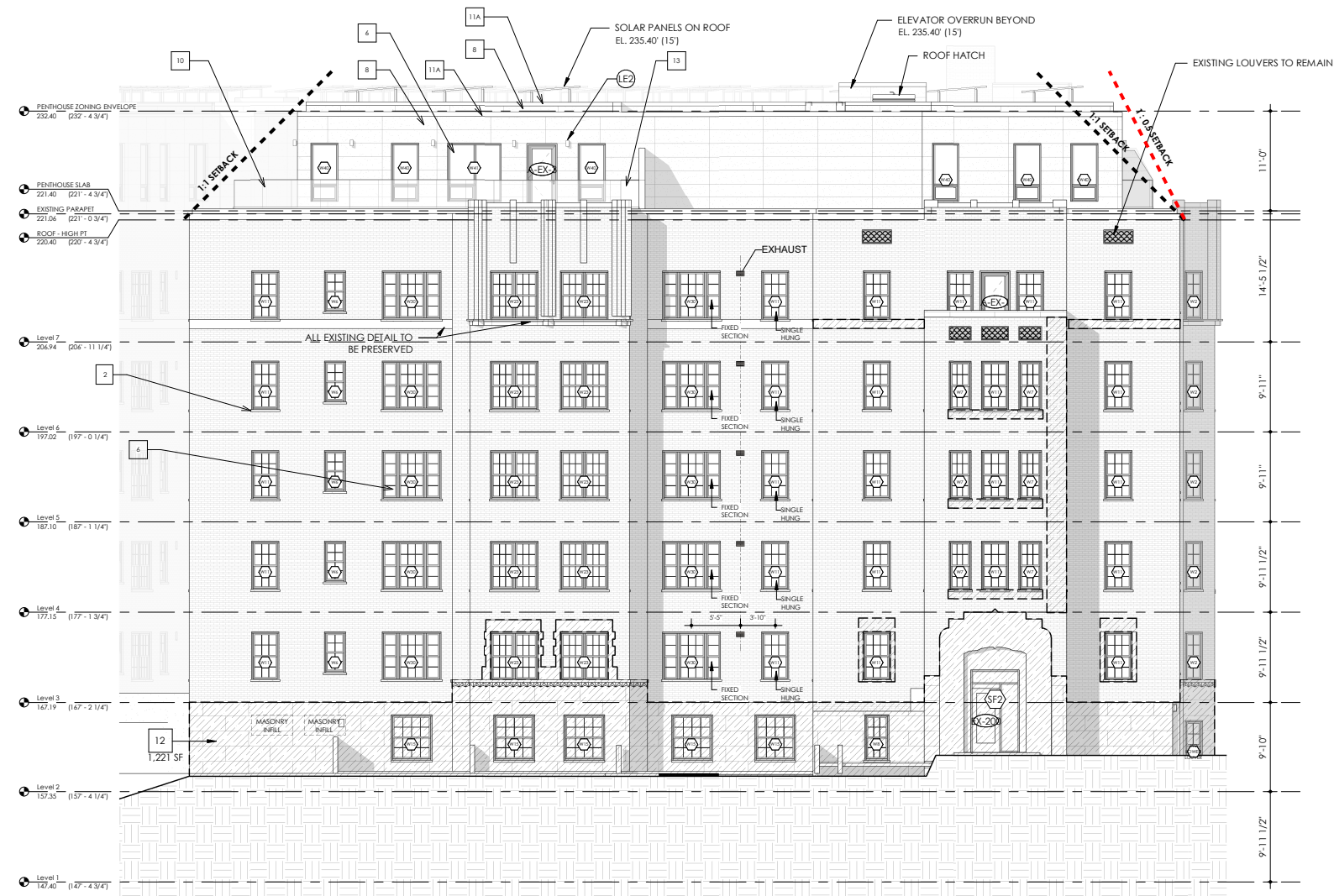


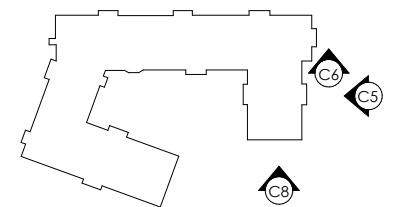
C8 PROPOSED - SOUTH ELEVATION  
1/8" = 1'-0"



C6 PROPOSED - SOUTH ELEVATION - LANIER PL. BAY  
1/8" = 1'-0"



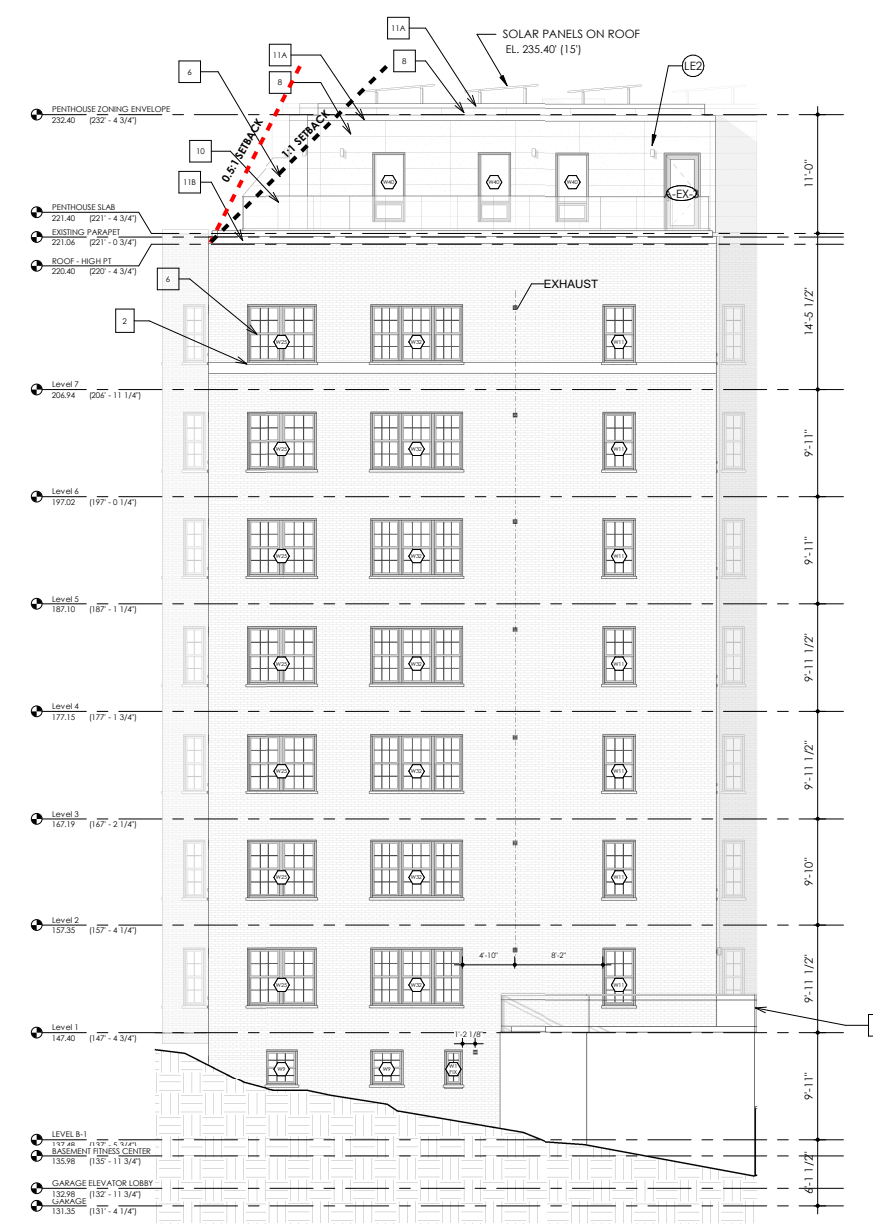
C5 PROPOSED - EAST ELEVATION - LANIER PLACE  
1/8" = 1'-0"



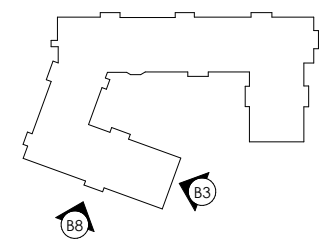
# LANIER PLACE ELEVATIONS



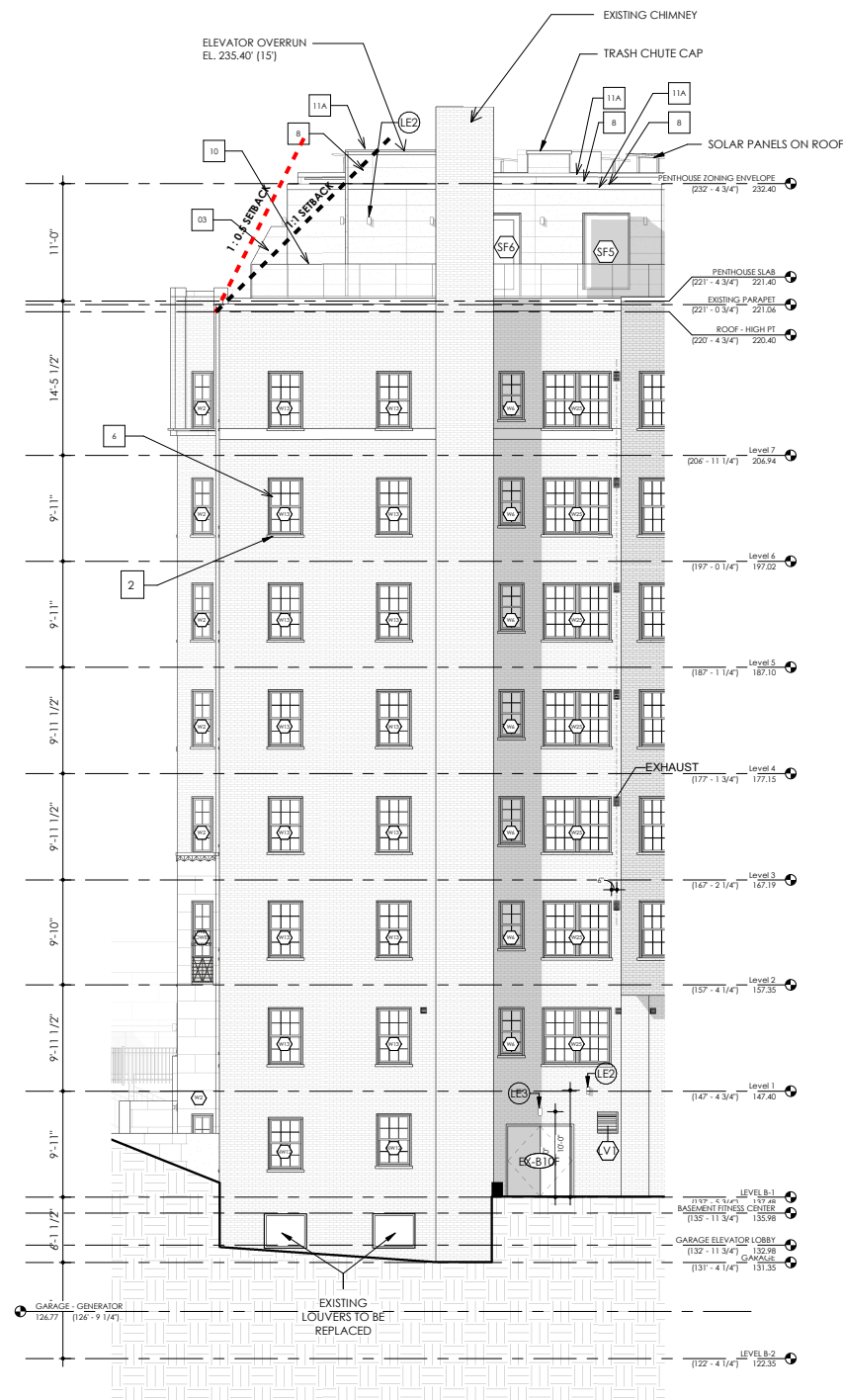
**B8** PROPOSED - SOUTHWEST ELEVATION - QUARRY ROAD  
1/8" = 1'-0"



**B3** PROPOSED - SOUTHEAST ELEVATION  
1/8" = 1'-0"



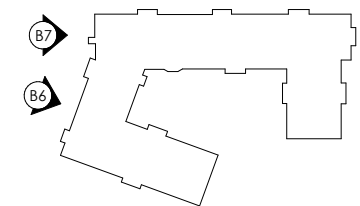
# QUARRY ROAD ELEVATIONS



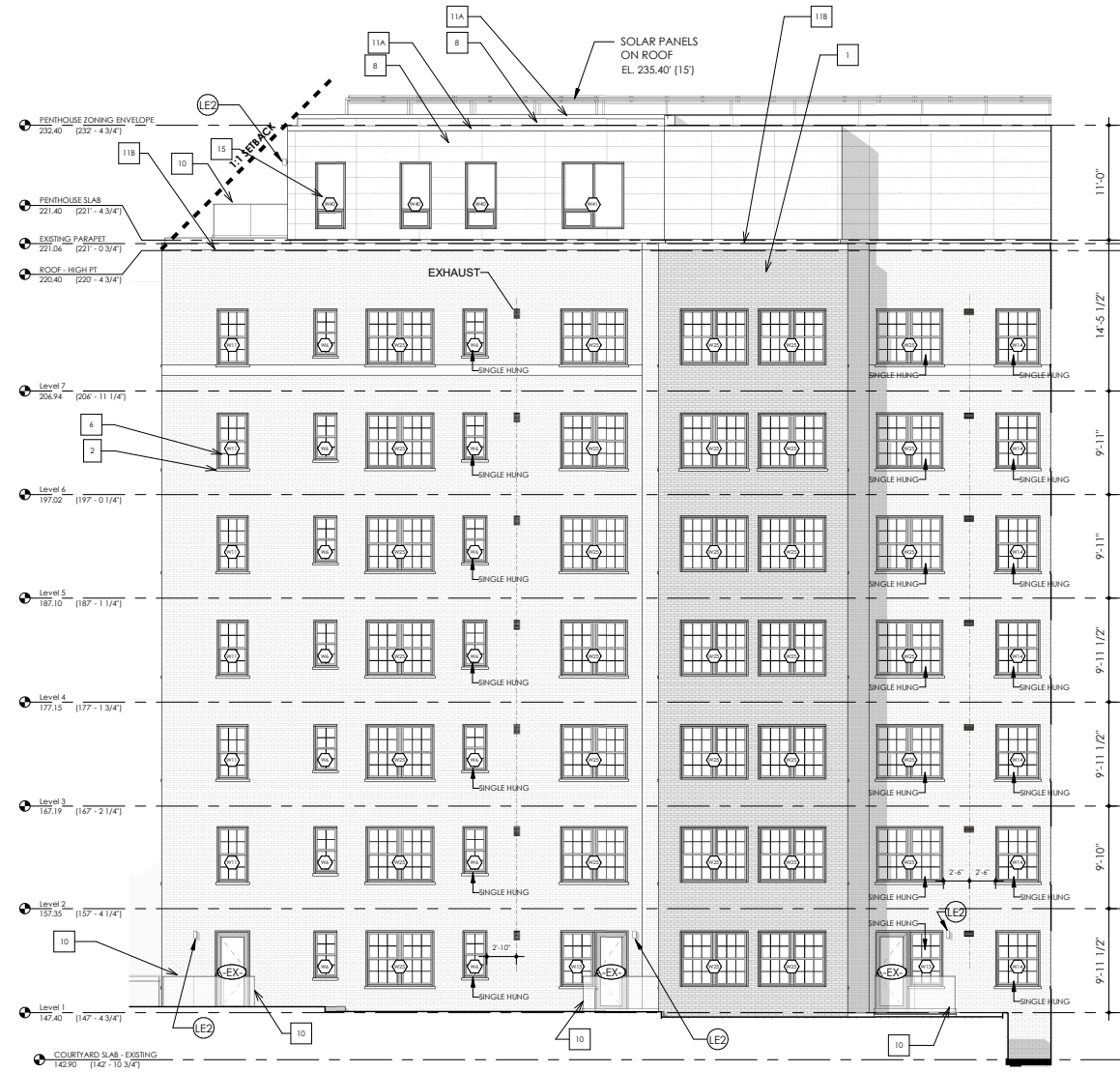
**B7** PROPOSED - WEST ELEVATION  
1/8" = 1'-0"



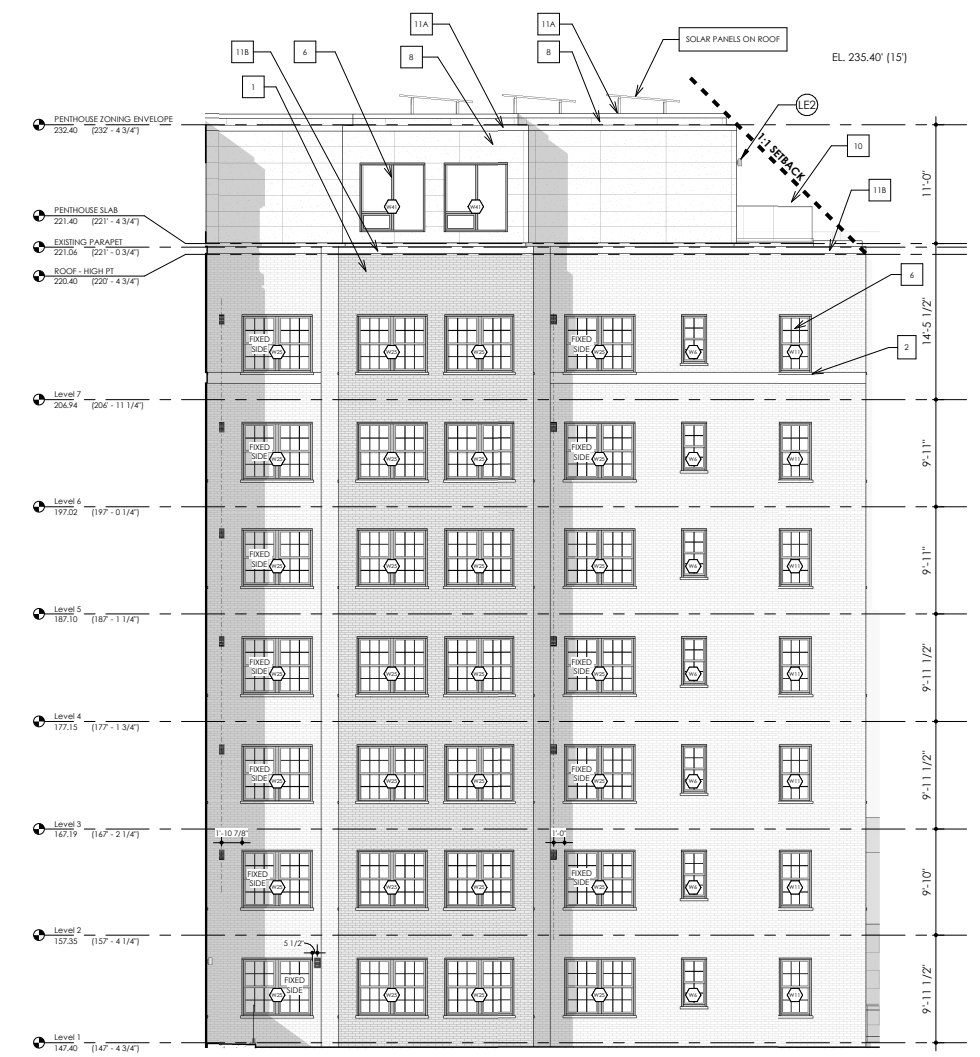
**B5** PROPOSED - WEST ELEVATION - LOADING RAMP  
1/8" = 1'-0"



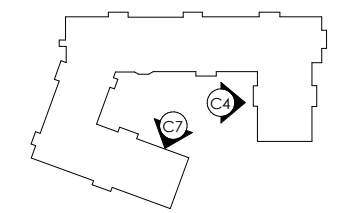
## WEST/LOADING ELEVATIONS



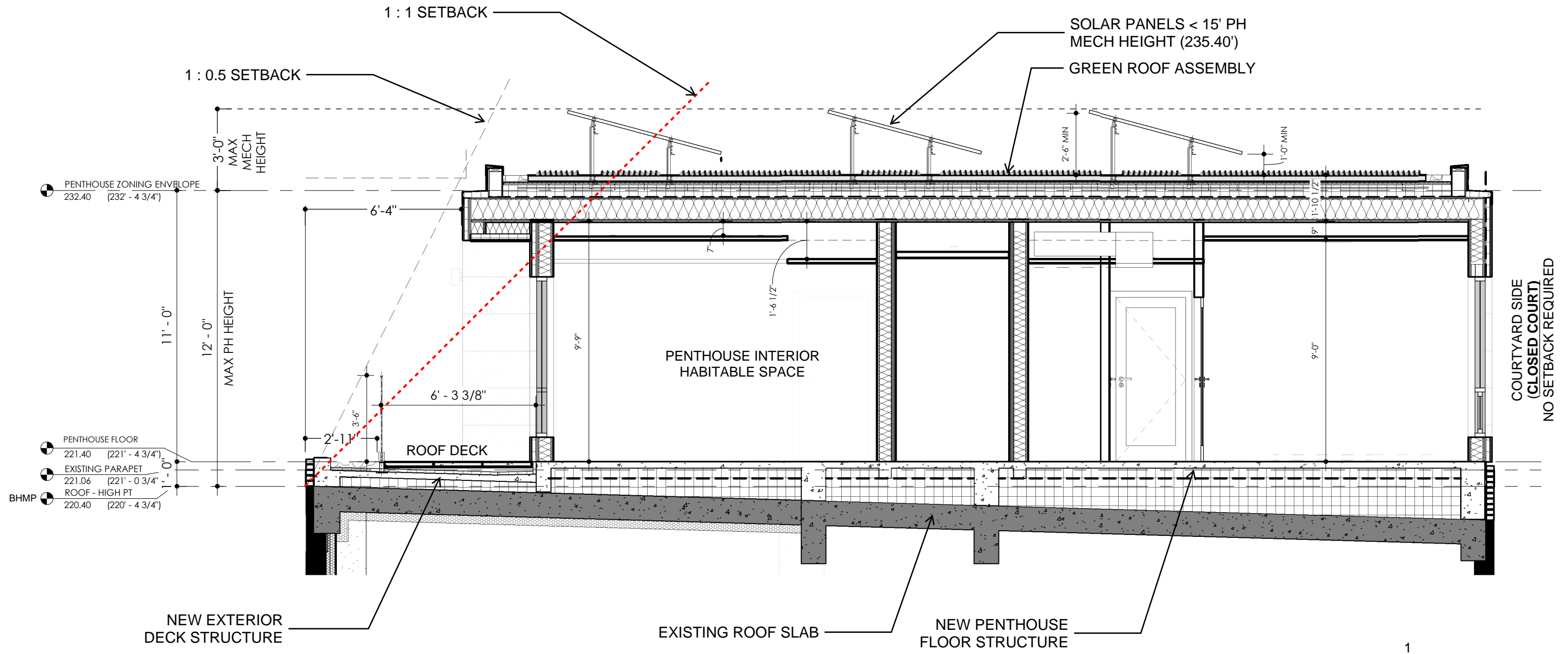
**C7** PROPOSED - COURTYARD SOUTH  
1/8" = 1'-0"



**C4** PROPOSED - COURTYARD EAST  
1/8" = 1'-0"



# COURTYARD ELEVATIONS



- PENTHOUSE ZONING ENVELOPE  
232.40 (232' - 4 3/4')
- PENTHOUSE FLOOR  
221.40 (221' - 4 3/4')
- EXISTING PARAPET  
221.06 (221' - 0 3/4')
- BHMP ROOF - HIGH PT  
220.40 (220' - 4 3/4')

**1** SECTION - NORTH PENTHOUSE  
 1/4" = 1'-0" (REF. A7 /A110)

